



THAI HOSPITAL PRODUCTS

The **LEADING SPECIALIST** *for*
DISPOSABLE MEDICAL APPAREL PRODUCTS





THAI HOSPITAL PRODUCTS



CONTENT

- 03 COMPANY PROFILE / VISION / MISSION
- 04 QUALITY & CERTIFICATION
- 05 OVERALL PRODUCTS & GEOGRAPHIC BASE

Overall Products

- 06 HEADWEARS
 - 08 FACE MASKS
 - 10 GOWNS
 - 15 SHOES
 - 16 GENERAL ITEMS
 - 18 MEDICAL INSTRUMENT COVER
 - 19 MATERIAL / COLOR SWATCHES
-

Thai Hospital Products is a Thailand-based private company. It was established in 1994 with office and factory conveniently located in central Bangkok and outskirts of Bangkok respectively.

We are the leading manufacturer of full range of disposable medical products with customer base around the world. At Thai Hospital Products, we work closely with our customers to understand their needs so that we can supply outstanding quality, value and service. Our product range includes Face Masks, Surgical Gowns, Isolation Gowns, Lab Coats, Coveralls, PE Gowns, Aprons, Nurse Caps, Surgeon Caps, Shoe Covers, Boot Covers, Instrument Cover and other medical products according to customer requirement.

We have won several prestigious awards from The Ministry of Public Health, Thai FDA, and multinational customers. These awards are in recognition of our efforts and dedication in providing the highest quality products and services.

Thai Hospital Products also gives back to the community by donating medical products and funds to local community and charitable organizations, such as Thai Red Cross, Pakkred Children Home, Pakkred Hospital, Suan Santitham Foundation, and AIDS Temple.



VISION

TO BE RECOGNIZED AS WORLD CLASS PROVIDER OF HIGH QUALITY DISPOSABLE MEDICAL PRODUCTS AND SERVICES THAT ENHANCE THE QUALITY OF LIFE OF THOSE WE SERVE.

MISSION

IN ORDER TO REALIZE OUR VISION, OUR MISSION MUST BE TO EXCEED THE EXPECTATIONS OF OUR CUSTOMERS AND GROW OUR BUSINESS BY PRODUCING AND MARKETING DISPOSABLE MEDICAL PRODUCTS THAT ARE LEADERS IN BOTH QUALITY AND COST THROUGH THE COMBINATION OF INNOVATION, AND PEOPLE AND OPERATIONAL EXCELLENCE.

QUALITY & CERTIFICATION



from Top Left

- 01 ISO 9001:2008
BSI Certificate
- 02 ISO 13485:2003
BSI Certificate
- 03 Thai GMP
Certificate
- 04 Thai FDA
Quality Award



OVERALL PRODUCTS

HEADWEARS:

Nurse Caps
Surgeon Caps / Hoods
Mob Caps

FACE MASKS:

Earloop
Vertical / Horizontal Tie
Anti-Fog Foam
Anti-Fog Shield
Anti-Fog EVA Film
Anti-Reflection Stripe
Duck Bill
Active Carbon
Printed

GOWNS:

Surgical Gown
Coverall
Lab Coat
PE Gown / Apron
Isolation Gown
Scrub Suit

SHOES:

Boot Cover
Shoe Cover

GENERAL ITEMS:

CSR Sterilization Wrap
Surgical Drape
Sleeve Cover
Bed Sheet / Pillow Case
Pouch / Bag
Others

MEDICAL INSTRUMENT COVERS:

Mayo Stand Cover
Image Cover



GEOGRAPHIC
BASE





|||||+|
HEADWEARS





BOUFFANT / NURSE CAP

Style:
+ Elastic

Material:
+ PP Spunbond

Size:
19"
21"
24"

Color:
White
Blue
Green
Pink
Violet
Printed

SURGEON CAP / HOOD

Style:
+ Elastic
+ Tie
+ Sweatband

Material:
+ PP Spunbond
+ Spunlance
+ Viscose

Size:
Universal
L
XL

Color:
White
Blue
Green

MOB CAP

Style:
+ Elastic

Material:
+ PP Spunbond

Size:
19"
21"
23"

Color:
White
Blue
Green
Pink
Violet
Printed

**please see color swatches on printed material page (p.19)*



Horizontal Tie



Duck Bill



Active Carbon

FACE MASKS



FACE MASK

Style:

- + 1-4 Ply
- + Earloop
- + Vertical / Horizontal Tie
- + Duck Bill
- + Printed

Optional:

- + Anti-Fog Shield
- + Anti-Fog EVA Film
- + Anti-Fog Foam
- + Anti-Reflection Stripe
- + Active Carbon

Material:

- + PP Spunbond
- + PP Meltblown
- + PP Thermalbond
- + ES Thermalbond
- + Cellulose

Size:

- S
- M
- L
- XL

Color:

- White
- Blue
- Green
- Pink
- Violet

**please see color swatches on printed material page (p.19)*



FACE SHIELD WITH SPONGE FOAM HEAD LOOP

Material: Anti-Fog Shield + Contoured Foam + Latex Free Headband

Size: Universal

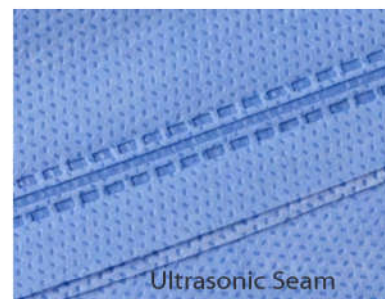
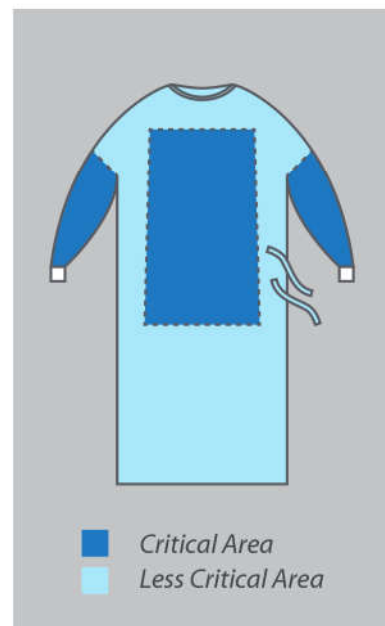
Color: Clear



Front Tie



Side Tie



GOWNS

SURGICAL GOWN

Style :	Overlock or Double Stitch / Ultrasonic Seam
Optional:	Reinforced / Non-Reinforced
Material:	SMMS / Spunlace
Size:	S / M / L / XL
Color:	Blue / Green
Sterilization:	ETO / Gamma
Standard:	AAMI / EN13795-3

**please see color swatches on printed material page (p.19)*



Hood



Zipper



COVERALL

Style:

- + Hood
- + Zipper
- + Elastic Cuffs
- + Knitted Cuffs
- + Boot

Material:

- + PP Spunbond
- + PP Spunbond Coated PE

Size:

- S
- M
- L
- XL

Color:

White

LAB COAT

Style:

- + Elastic / Knitted Cuffs
- + Snaps
- + Zipper
- + Full / Knitted Collar

Material:

- + PP Spunbond
- + PP Spunbond Coated PE

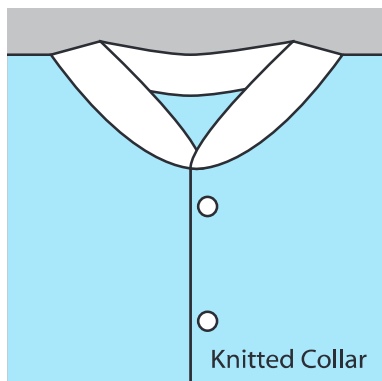
Size:

- S
- M
- L
- XL

Color:

White
Blue

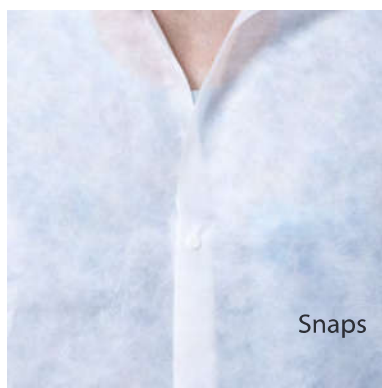
**please see color swatches on printed material page (p.19)*



Knitted Collar



Full Collar

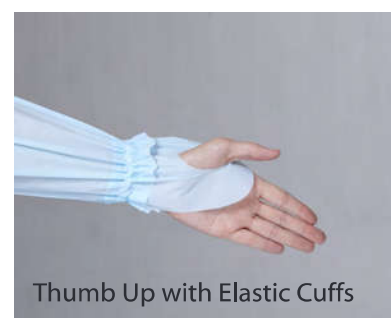


Snaps



Knitted Cuffs





Material:
Film
Spunbond Coated PE
Spunbond

+ SMMS

Size:
S
Universal
L
XL

Color:
White
Blue
Yellow





Elastic Cuffs



Knitted Cuffs

ISOLATION GOWN

Style:

- + Elastic Cuffs
- + Knitted Cuffs

Material:

- + PP Spunbond
- + PP Spunbond Coated PE

Size:

- S
- M
- L
- XL

Color:

- Blue
- Yellow
- Green
- Pink

X-RAY GOWN

Style:

- + No Sleeve
- + Short Sleeve
- + Long Sleeve

Material:

- + PP Spunbond
- + PP Spunbond Coated PE
- + SMMS

Size:

- S
- M
- L
- XL

Color:

- Blue
- Dark Blue

**please see color swatches on printed material page (p.19)*





SCRUB SUIT / PATIENT GOWN

Style:
+ V Neck
+ U Neck

Material:
+ Spunlace
+ SMMS

Size:
S
M
L
XL

Color:
Blue
Dark Blue

PANTS

Style:
+ Open Front
+ Open Back
+ Elastic Waist
+ Tie Waist

Material:
+ Spunlace
+ SMMS

Size:
S
M
L
XL

Color:
Blue
Dark Blue

**please see color swatches on printed material page (p.19)*



SHOES

BOOT COVER

Style:

- + Ankle High
- + Knee High
- + Non-Skid

Material:

- + PP Spunbond
- + PP Spunbond Coated PE
- + SMMS Coated PE
- + Spunlace Coated PU / PE

Size:

Universal

Color:

White
Blue

SHOE COVER

Style:

- + Plain
- + Non-Skid
- + Anti-Static

Material:

- + PP Spunbond
- + PP Spunbond Coated PE

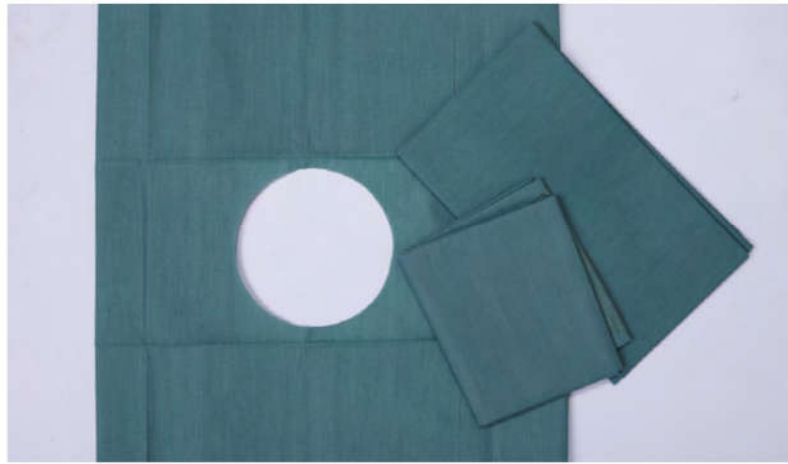
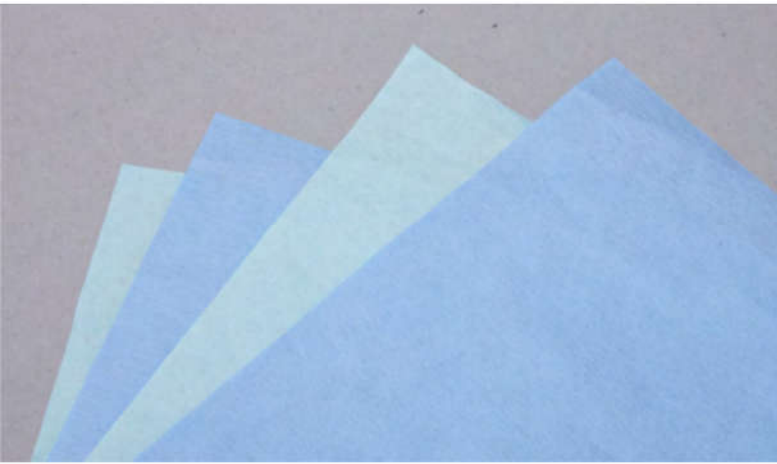
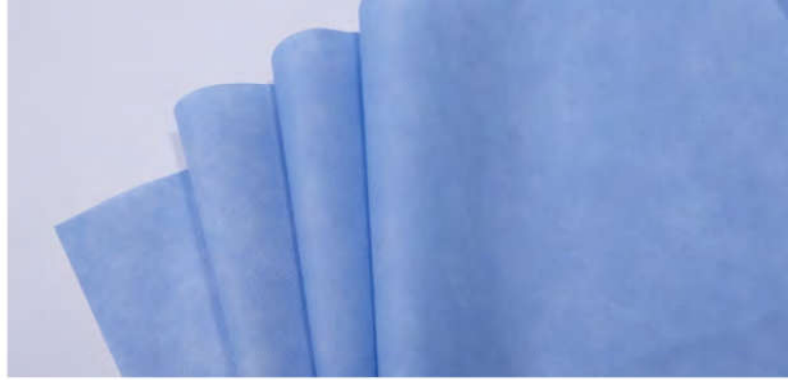
Size:

Universal
L
XL

Color:

White
Blue
Green

*please see color swatches on printed material page (p.19)



GENERAL ITEMS

CSR STERILIZATION WRAP

Material:
+ SMMS
+ Crepe Paper

Size:
30x30 cm (12"x12")
45x45 cm (18"x18")
60x60 cm (24"x24")
75x75 cm (30"x30")
90x90 cm (36"x36")
100x100 cm (39"x39")
120x120 cm (48"x48")
135x135 cm (53"x53")
140x230 cm (55"x90")
160x160 cm (63"x63")
160x210 cm (63"x82")

Color:
Blue
Green

SURGICAL DRAPE

Material:
+ Viscose Laminate PE

Size:
60x60 cm (24"x24")
90x90 cm (36"x36")
120x120 cm (48"x48")

Color:
Green

**please see color swatches on printed material page (p.19)*

SLEEVE COVER

Style:

+ Elastic Cuffs
+ Knitted Cuffs

Material:

+ PP Spunbond
+ PP Spunbond Coated PE
+ Spunlance

Size:

L
XL

Color:

White
Blue
Green

BEARD COVER

Style:

+ Elastic

Material:

+ PP Spunbond

Size:

Universal

Color:

White
Blue
Green
Pink
Violet
Printed

BED SHEET & PILLOW CASE

Style:

+ Elastic Cover

Material:

+ Viscose

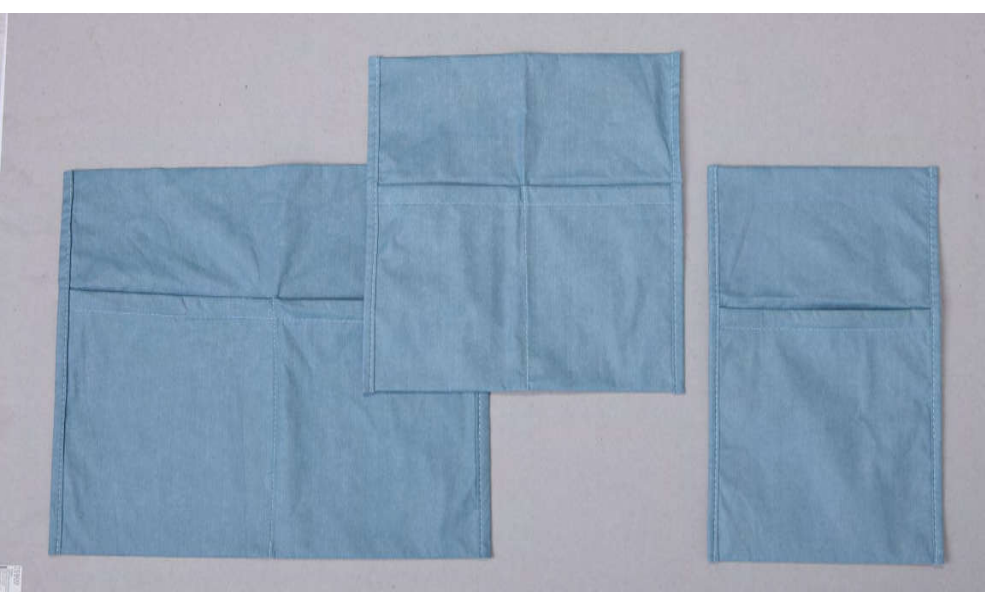
Size:

Universal

Color:

White

**please see color swatches on printed material page (p.19)*





MEDICAL INSTRUMENT COVER

MAYO STAND COVER

Sterilization:
+ ETO

Material:
+ SMMS

Size:
60 X 140 cm
80 X 140 cm

Color:
Blue

**please see color swatches on printed material page (p.19)*

IMAGE COVER

Sterilization:
+ ETO

Material:
+ PE Film

Size:
75 cm
100 cm
120 cm
150 cm



MATERIAL

Material:

- + PP Spunbond
- + SMMS
- + Spunlace
- + Viscose



COLOR SWATCHES





THAI HOSPITAL PRODUCTS

Head Office:

T.I.T. Tower 861/8 Soi Wat-Pai-Ngern,
Bangklo, Bangkorlaem, Bangkok 10120 Thailand

Tel: +66 2674-9700
+66 2674-6707-9 (Domestic Market)

Fax: +66 2674-9609

Factory Address :

45/2, 45/3 Moo 2, Sukhaprachasan 2 Road,
Bangpud, Pakkred, Nonthaburi 11120 Thailand

E-mail : tmarket1@titgroup.com
cmatura@titgroup.com
tlocal2@titgroup.com (Domestic Market)

Website : www.thaihospitalproducts.com